

G8SAFE GATE HINGES INSTALLATION GUIDE

ADJUSTABLE SELF-CLOSING PAIR (Suitable for Pool & Garden)

HEAVY DUTY ADJUSTABLE SELF-CLOSING PAIR (Suitable for Garden)

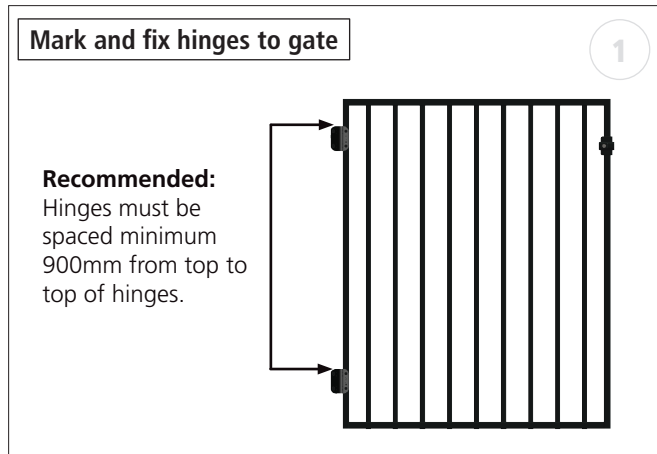
Before installing a pool hinges, check with your local Council regarding specific pool fence requirements.
Note: Images may differ slightly from actual product.

Contains:

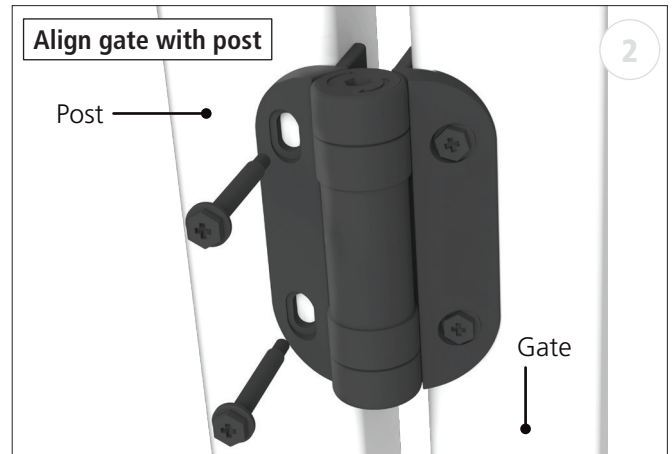
- » 2 x Hinges
- » 1 x Safety Cap
- » 1 x Allen Key
- » 1 x Finishing Cap
- » Installation guide

Tools required:

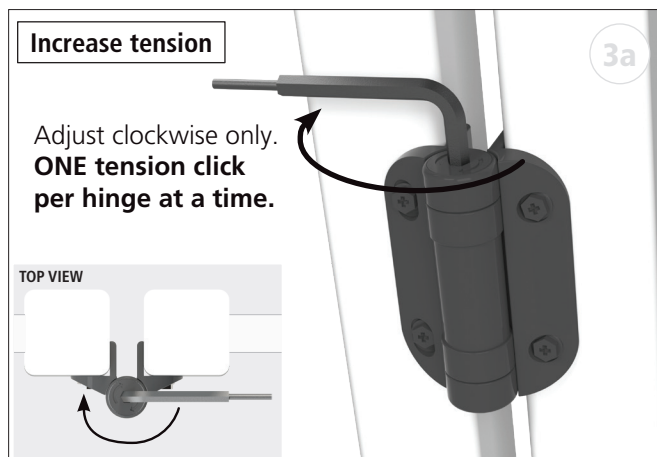
- » Drill
- » Measuring tape
- » Phillips head screwdriver



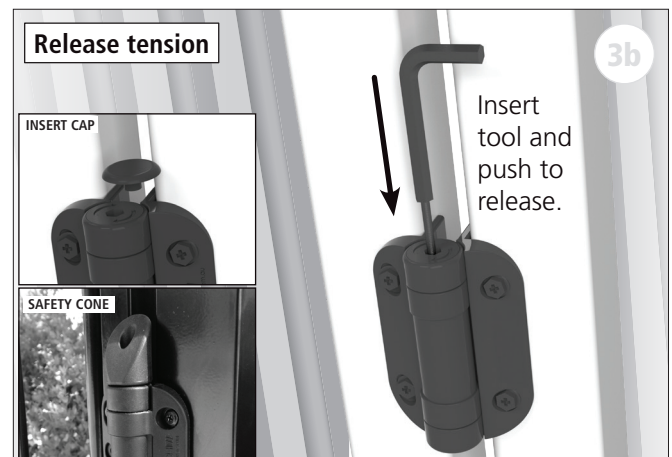
1. Mark and fix hinges to gate.



2. Align gate with hinge post and fix off hinges to post.



- 3a. To adjust hinge tension, simply use supplied tool:
- » ONE tension click per hinge at a time.
 - » Check for desired gate tension after each adjustment. Gate must be able to self close from any open position.
 - » Aim for equal amounts of tension clicks on each hinge if possible.
 - » Maximum FOUR tension clicks per hinge.



- 3b. Once adjusted, fit the supplied caps to the top. To avoid kids climbing, the Safety Cone MUST be fitted to the bottom hinge.

NOTE:

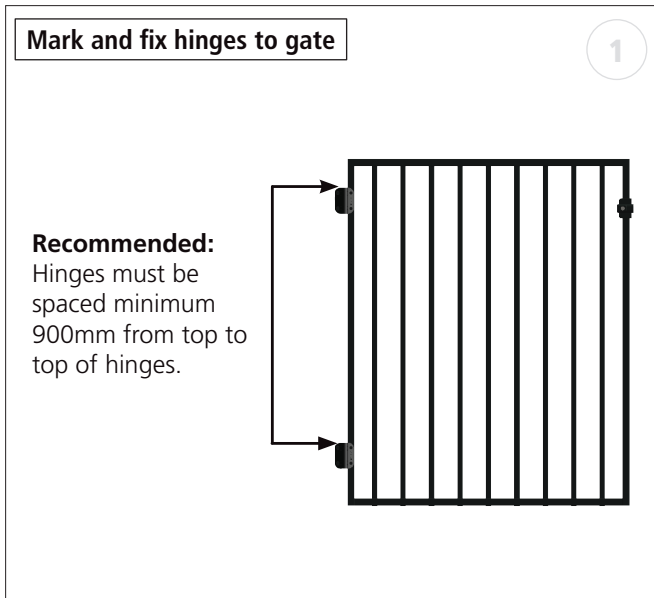
- » Before installing pool hinges, check with your local Council regarding specific pool fence requirements.
- » Must be installed in accordance with the local fence / barrier codes and regulations.
- » Maintain latch and hinges regularly, making sure that latching hook, striker bolt and other moving parts from latch and hinges are free from debris.
- » Please, note that these hinges are designed for non-automated gates. The use for other purposes may affect performance.
- » These latch and hinges will operate correctly only if installed and maintained in accordance with ProtectorAI™ instructions.
- » Images may differ slightly from actual product.

G8SAFE GATE HINGES INSTALLATION GUIDE

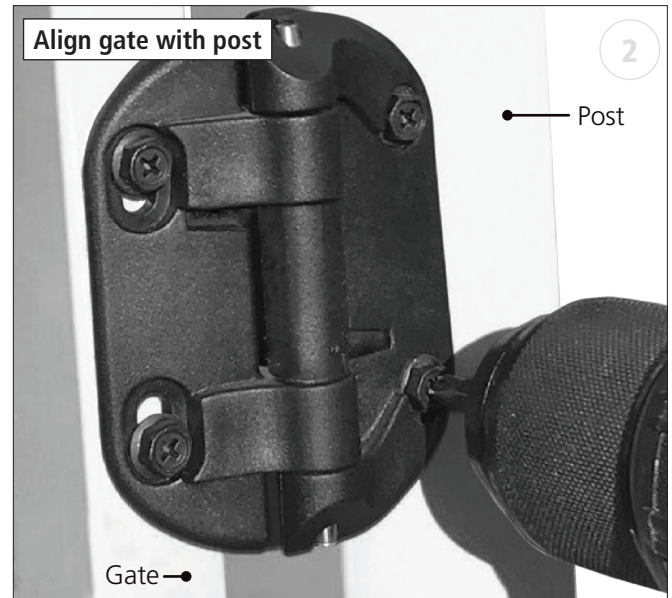
SELF-CLOSING PAIR (Suitable for Pool & Garden)
NON SELF-CLOSING PAIR (Suitable for Garden)

Before installing a pool hinges, check with your local Council regarding specific pool fence requirements.
Note: Images may differ slightly from actual product.

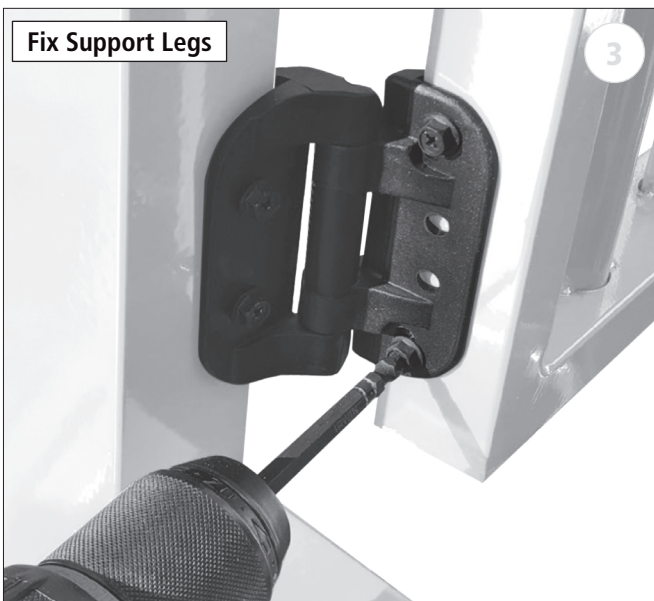
- Contains:
Comes with:
- » 2 Hinges
 - » Screws
 - » Installation guide
- Tools required:
- » Drill
 - » Measuring tape
 - » Phillips head screwdriver



1. Mark and fix hinges to gate.



2. Align gate with hinge post and fix off hinges to post.



3. For hinges with support legs also fix to post.

NOTE:

- » Before installing pool hinges, check with your local Council regarding specific pool fence requirements.
- » Must be installed in accordance with the local fence / barrier codes and regulations.
- » Maintain latch and hinges regularly, making sure that latching hook, striker bolt and other moving parts from latch and hinges are free from debris.
- » Please, note that these hinges are designed for non-automated gates. The use for other purposes may affect performance.
- » These latch and hinges will operate correctly only if installed and maintained in accordance with ProtectorAI™ instructions.
- » Images may differ slightly from actual product.

ProtectorAI
More than just fencing.



SCAN FOR WARRANTY