

# COLOR FOR INDUSTRIAL DESIGN

## Interpon COLOR ENERGY



**French Blue**  
Gloss MJ067A



**Blaze Blue**  
Gloss MJ034A



**Lemon Yellow**  
● Gloss ME068A



**X15 Orange**  
● Gloss MF035A



**Signal Red**  
● Gloss MG036A



**Flame Red**  
● Gloss MG071A



**Space Blue**  
Gloss MJ008A



**Deep Pool**  
Gloss MK002A



**Safety Yellow**  
● Gloss ME096A



**Bistro Orange**  
● Gloss MF014A



**Electric Red**  
● Gloss MG030A



**Navy**  
Gloss MJ011A



**Lawn Green**  
Gloss MK038A



**Yellow Gold**  
● Gloss ME038A



**Flaming Red**  
● Gloss MG045A



**Hardie Red**  
● Gloss MG016A

## Interpon RIPPLE SERIES



**Ripple Black Leather**  
● Matt EN432A



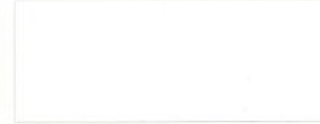
**Ripple Notre Dame**  
Gloss ML444A



**Ripple RAL9002**  
Gloss MA424A



**Ripple X15 Orange**  
● Gloss MF406A



**Ripple White**  
Gloss MA494A



**Ripple RAL7035**  
Gloss ML435A



**Ripple Black**  
Gloss MN427A



**Ripple Graphite**  
● Matt EY422A



**Ripple Storm Grey N42**  
Gloss ML421A



**Ripple Gypsy Beige**  
Gloss MD453A



**Ripple Grey Nurse**  
● Matt EL422A



**Ripple APO Grey**  
Gloss ML463A

## Interpon SABLÉ™ COLLECTION



**Sablé™ Black**  
Texture MN341A



**Sablé™ Bass**  
Texture GN297A



**Sablé™ Asteroid**  
Texture GN271A



**Sablé™ Brilliance**  
Texture GL277A



**Sablé™ APO Grey**  
Texture ML307A



**Sablé™ Core Ten™**  
Texture GX350A



**Sablé™ Grey Nurse**  
Texture ML320A

## Interpon VIVICA™ PEARLESCENT RANGE



**Vivica™ Anthracite**  
Satin GY144A



**Vivica™ Pewter Pearl**  
Satin GY199A



**Vivica™ Palladium Silver**  
Satin GY184C



**Vivica™ Treasured Silver**  
Satin GW103K



**Vivica™ Beach Sand**  
Matt GY234A



**Vivica™ Snow Dust**  
Matt GA228A



**Vivica™ Charcoal Metallic**  
Gloss GM019A



**Vivica™ Storm Front**  
Matt GL249A



**Vivica™ Nobel Silver**  
Satin GY119A



**Vivica™ Mercury Silver**  
Gloss GW003K



**Vivica™ Ultra Silver**  
Gloss GY070A



**Vivica™ Citi®**  
Matt GL211A



**Vivica™ Black Onyx**  
Gloss GY042A



**Vivica™ Charcoal Pearl**  
Matt GY237A



**Vivica™ Mystic**  
Matt GY236A

## Interpon COLLECTION ANODIC



**Anodic Slate Grey**  
Matt GY218A



**Anodic Champagne**  
Matt GY276A



**Anodic Natural**  
Matt GY235A



**Anodic Silver Grey**  
Matt GL237A



**Anodic Clear**  
Matt GY221A



**Anodic Off White**  
Matt GD227A



**Anodic Nighthawk**  
Matt GY244A



**Anodic Dark Grey**  
Matt GL213A



**Anodic Bronze**  
Satin GY114A



**Anodic Natural Silk**  
Matt GY242A



**Anodic Natural Merlin**  
Matt GY243A

## Interpon ANTI GRAFFITI



EasyClean Transformer Grey  
Gloss PL031A



EasyClean Clear  
Gloss UZ607I

## Interpon LIVING SERIES



Bright White  
Gloss GA030A



Shoji White  
Satin GA160A



Periwinkle  
Gloss ML073A



Storm Grey N42  
Gloss ML060A



Wedgewood  
Satin MJ180A



Transformer Grey  
Gloss GL031A



Wizard  
Gloss GJ054A



Stromboli  
Satin GK148A



Coral Back  
Gloss GN063A



Urban Black  
Satin MN150A

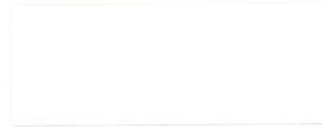
## Interpon PRIMERS



MetaPrep™ Grey  
EL286A



PZ550 MetaZinc™  
ALZ55N



White  
Satin GA124A



Olde Pewter  
Satin GL175A



Notre Dame  
Gloss GL040A



Roseberry Grey  
Gloss GL015A



Custom Black  
Matt GN248A



MetaPrep™ Gold  
EE101A



PZ770 Zinc Primer  
ALZ77F



Urban White  
Gloss MA065A



Off White  
Matt GA211A



Oyster Grey  
Matt GL258A



APO Grey  
Satin GL107A



Pottery  
Satin GM175A

## Interpon SILVERS & CLEAR



SupaClear VP188  
Gloss JZ088K



Bright Silver  
● Matt MW201T



Rivergum  
Gloss GD042A



Barley  
Gloss GD007A



Almond Ivory  
Gloss GD016A



Stone Beige  
Matt GD247A



Hamersley Brown  
Satin GM100A



SilvaChrome  
● Gloss P3000I



Titanium Lisse  
● Satin MW112F



White Birch  
Gloss GA057A



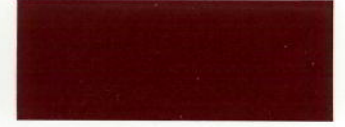
Primrose  
Gloss GD037A



Magnolia  
Gloss GD025A

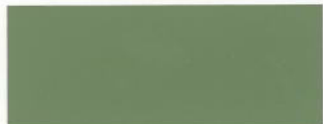


Doeskin  
Satin GD188A



Claret  
Satin GG142A

# Interpon EXCEL™ POROUS SUBSTRATES



**Excel™ Pale Eucalypt®**  
Matt GK236A Satin GS136A



**Excel™ Windspray®**  
Matt GL266A Satin GP166A



**Excel™ Shale Grey®**  
Matt GL284A Satin GP184A



**Excel™ Pearl White**  
Gloss GA029A



**Excel™ Classic Cream®**  
Matt GD245A Satin GU145A



**Excel™ Primrose**  
Gloss GD031A



**Excel™ Wilderness®**  
Matt GK289A Satin GS189A



**Excel™ Blue Ridge®**  
Matt GJ221A Satin GQ121A



**Excel™ Woodland Grey®**  
Matt GL205A Satin GP105A



**Excel™ Surfmist®**  
Matt GA236A Satin GB136A



**Excel™ Sandbank®**  
Matt GM216A Satin GT116A



**Excel™ Paperbark®**  
Matt GD214A Satin GU114A



**Excel™ Cottage Green®**  
Matt GK274A Satin GS174A



**Excel™ Deep Ocean®**  
Matt GJ203A Satin GQ103A



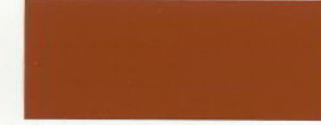
**Excel™ Ironstone®**  
Matt GL236A Satin GP136A



**Excel™ Evening Haze®**  
Matt GM235A Satin GT135A



**Excel™ Jasper®**  
Matt GM214A Satin GT114A



**Excel™ Headland®**  
Matt GG219A Satin GV119A



**Excel™ Hawthorn Green**  
Gloss GK030A



**Excel™ Charcoal**  
Satin GL180A



**Excel™ Monument®**  
Matt GL229A Satin GP129A



**Excel™ Dune®**  
Matt GL252A Satin GP152A



**Excel™ Loft®**  
Matt GM236A Satin GT136A



**Excel™ Manor Red®**  
Matt GG262A Satin GV162A



**Excel™ Heritage Green**  
Gloss GK044A



**Excel™ Night Sky®**  
Matt GN231A Satin GN121A



**Excel™ Charcoal**  
Gloss GL035A



**Excel™ Bushland®**  
Matt GK203A Satin GS103A

Colors displayed on this color card are a guide only and have been matched as close as possible to Interpon production standards under daylight conditions. Due to the nature of the printing process some degree of color and gloss level variation may occur. Where more than one finish is available product color may vary. We recommend that you use production line prepared samples for final color selection or approval.

- Colors displaying the orange color square are not recommended for use where high UV exposure is likely.
- Colors displaying the red color square are for internal use only
- Colors displaying the blue color square are recommended to be over coated with SupaClear VP188 powder coating for exterior use or aggressive internal applications

## Interpon CUSTOMER CARE TEAM

**Interpon®**  
powder coatings  
**EVERY COLOR IS GREEN**

East Coast and South Australia Tel: 1800 630 516 Fax: 1800 650 786  
Western Australia Tel: 08 9494 7727 Fax: 08 9494 7771  
e: salesoz@interpon.com

[www.interpon.com.au](http://www.interpon.com.au)

New Zealand Tel: 0800 150 527 Fax: 09 820 1049  
e: salesnz@interpon.com

[www.interpon.co.nz](http://www.interpon.co.nz)